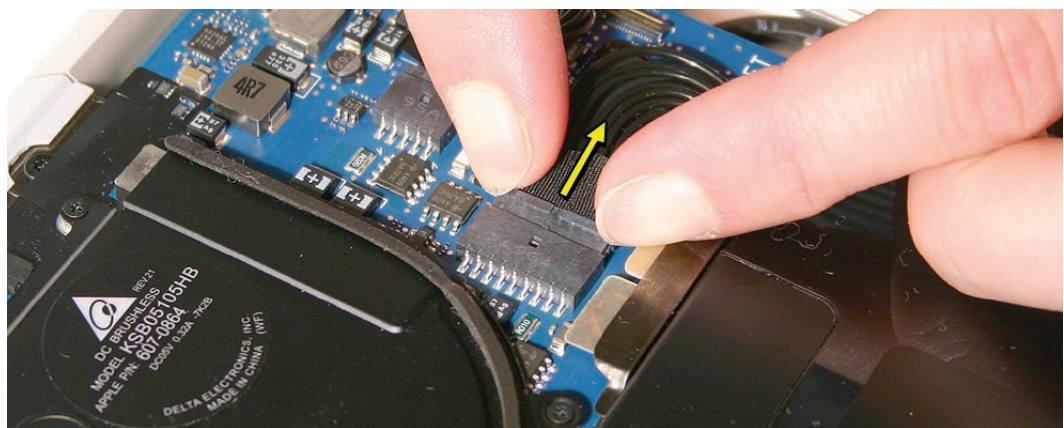
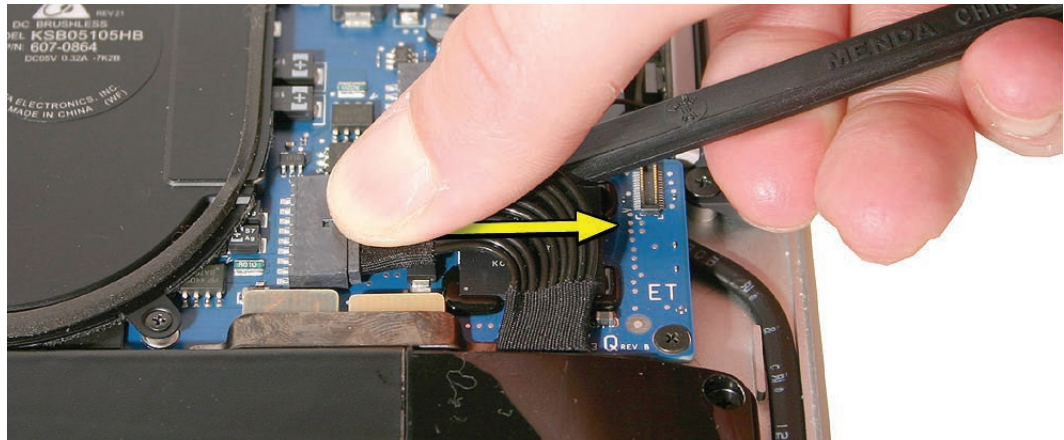
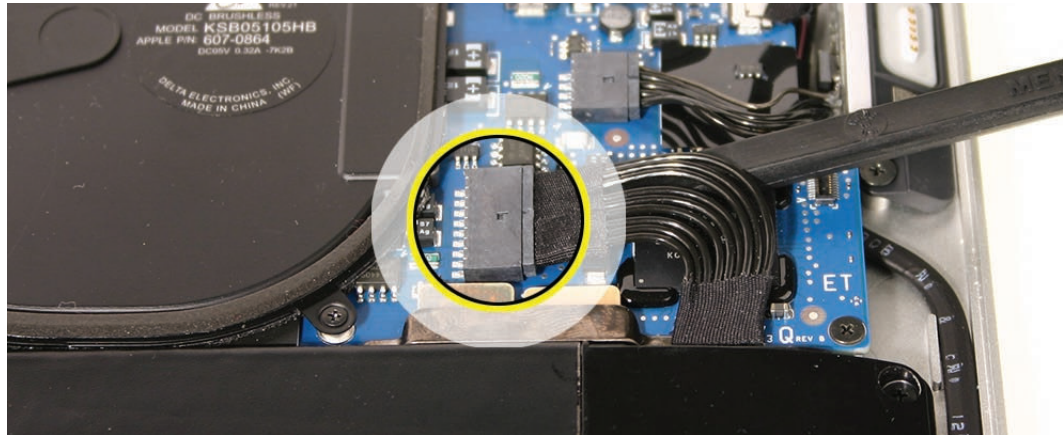


Removal Procedure

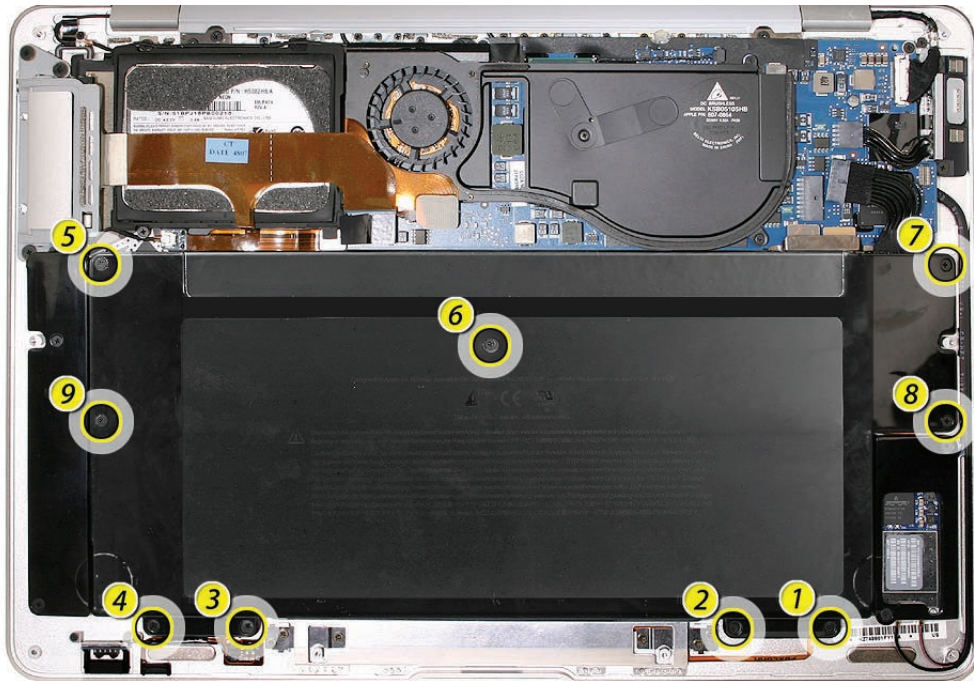
1. Disconnect the battery cable connector from the logic board, taking care to keep the cable connector flat when pulling it out of its mate. Use your thumb on top and a black stick beneath to prevent too much bend in the cable. An alternative is to use your index fingers (and nails) to grab the sides of the connector and pull straight out, level with the board.

Note: Halogen free cables and connectors are delicate. Handle with care to avoid damage.



2. Remove nine #00/000 Phillips screws in the following order.

Note: You may find screws tightly wedged in their sockets. If so, avoid stripping the head by bearing down firmly (albeit carefully) to release the screw and its locktight adhesive.



3. Lift the battery out evenly with both hands on either side to avoid bending or straining the battery pack. Always handle by the edges to avoid pressure to its inner surfaces. To keep the battery cable intact, do not lift or hold the battery using the cable or connector.

