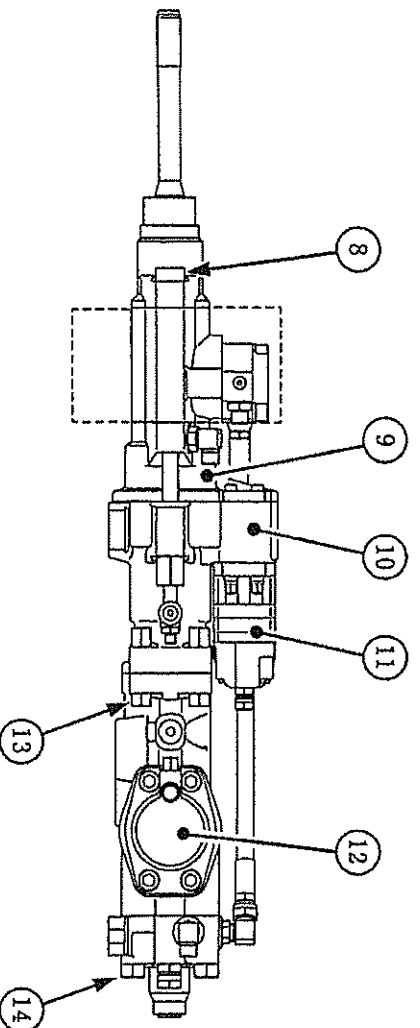
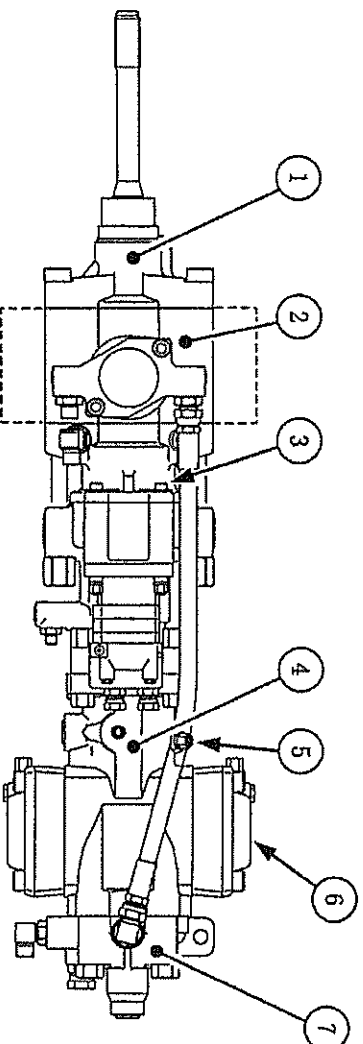


## 2. Major component parts



The external view shows HD609 II (with Q.E.D.).

- |                                |                            |                             |
|--------------------------------|----------------------------|-----------------------------|
| ① Front cap                    | ⑥ Low-pressure accumulator | ⑪ Orbit motor               |
| ② Extraction assembly (option) | ⑦ Back head                | ⑫ High-pressure accumulator |
| ③ Socket bolt                  | ⑧ Through bolt (F) ※       | ⑬ Through bolt (M1)         |
| ④ Cylinder                     | ⑨ Front head               | ⑭ Through bolt (D)          |
| ⑤ Stroke adjuster              | ⑩ Front cover              |                             |

※ Set bolt for the machine being equipped with Q.E.D.

## 8. Adjustment of piston stroke

### WARNING

Don't pull stroke adjuster ① out of the end face of nut ②, otherwise it may jump out to gush out high-pressure hydraulic oil.

The drifter is provided with stroke adjuster ① to be able to adjust the impact frequency optionally.

Work can be done efficiently by changing the impact frequency according to the objects to be drilled.

★ Stroke adjuster ① is mounted at the front of low-pressure accumulator.

Adjust the piston stroke by the screwing depth of stroke adjuster ① mounted to the drifter cylinder.

Loosen nut ② when adjusting stroke adjuster ①.

As stroke adjuster ① is screwed in, the piston stroke increases to reduce the impact frequency, but the impact force increases.

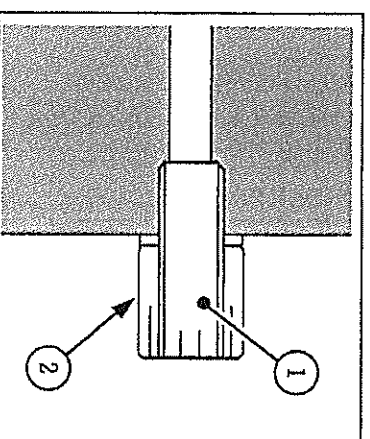
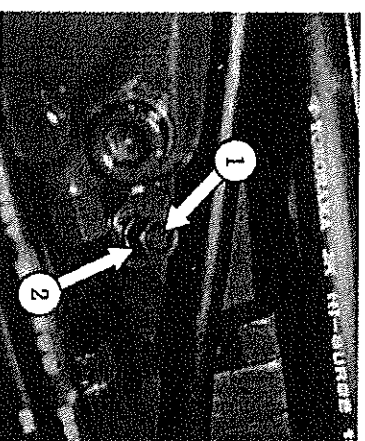
The piston stroke becomes the shortest at the position where the end face of nut ② meets the end face of stroke adjuster ①.

The impact frequency increases to the maximum, but the impact force decreases.

★ This position is specified as the reference position at the delivery time.

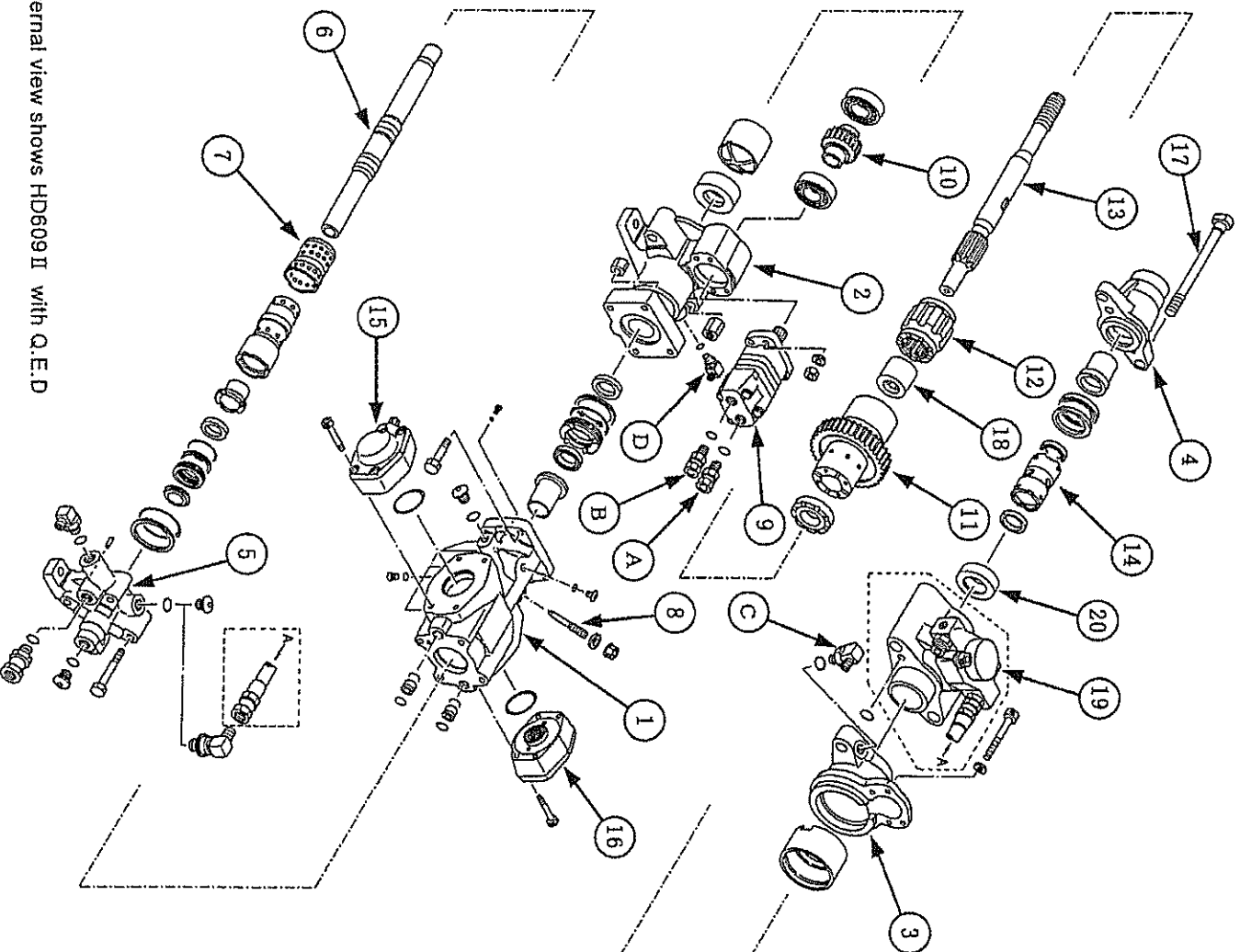
After adjusting the screw-in of stroke adjuster ①, fasten nut ② with the specified tightening torque.

Tightening torque : 80 N·m



### 3. Functions

★ For details of part names and part numbers of the drifter, refer to parts list.



The external view shows HD609 II with Q.E.D

- ① Cylinder
- ② Front head
- ③ Front cover
- ④ Front cap
- ⑤ Back head
- ⑥ Piston
- ⑦ Valve

- ⑧ Stroke adjuster
- ⑨ Orbit motor
- ⑩ Drive gear
- ⑪ Chuck driver
- ⑫ Chuck
- ⑬ Shank rod
- ⑭ Swivel body

- ⑮ High-pressure accumulator
- ⑯ Low-pressure accumulator
- ⑰ Set bolt (Through bolt)
- ⑱ Chuck driver bush
- ⑲ Extraction assembly (option)
- ⑳ Thrust washer