

# **MODEL GB7**

---

## **GROUT PUMP**

---



**OPERATION & MAINTENANCE MANUAL**  
**YEAR 2000**



- 6.7 Clean and flush Pump discharge port.
- 6.8 Reassemble the above and test the pump with water as explained in section 4.

## **7. SERVICING AND AIR MOTOR DISASSEMBLY**

This section is a general guide to assist with the Servicing and the general maintenance of the *GB7 Grout Pump*.

- 7.1 Carry out steps in section 6.3 to 6.5.
- 7.2 Pull the Displacement Rod (Part No. SPE072) as far as it will go and unscrew the Lock Nut (Part No. SPE086).
- 7.3 Push the Piston (Part No. SPE054) to the upside of the Stroke.
- 7.4 Unscrew the Cap Nut (Part No. SPE078) out of the Cylinder head (Part No. SPE049).
- 7.5 Grip the Trip Rod (Part No. SPE025) with padded pliers, screw Cap Nut off the Trip Rod.
- 7.6 Remove screws (Part No. SPE038), holding the Cylinder Part No. SPE049) to the Base. Carefully pull Cylinder straight up off the Piston (Part No. SPE054). Do not tilt the Cylinder, as it may damage the Cylinder wall.
- 7.7 Pull the Piston (Part No. SPE054), complete with displacement rod (SPE072) out of the Base (Part No. SPE030).
- 7.8 Check polished surfaces of the Piston (Part No. SPE054), Displacement Rod (Part No. SPE072) and Cylinder wall (Part No. SPE049) for marks and/or scratches. Replace parts if necessary.
- 7.9 Hold the Piston (Part No. SPE054) in a suitable vice. (preferably a padded vice) Push down on the Shuttle Toggle (Part No. SPE042) until it snaps down the Toggle Arms (Part No. SPE062). Remove the Lock Wires (Part No. SPE056), unscrew the top Valve Stem Locknuts (Part No. SPE047), unscrew the Valve Stems (Part No.

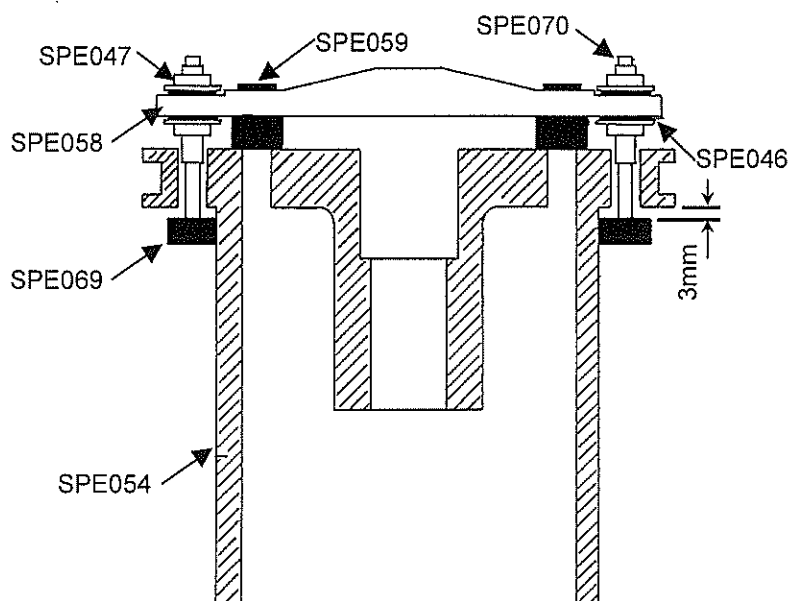


Figure 3.0

## 8. TESTING

This section is a general guide to assist with the testing of the *GB7 Grout Pump* to ensure maximum performance is achieved.

- 8.1 Set the pump up for testing as outlined in section 4.1 to 4.10.
- 8.2 The pump should run at low speed without jerking, if not, check the "O"Rings (Part No. SPE061 & SPE066) for wear. Check the correct size has been used.
- 8.3 Delivery rate at fast speed should be reasonably even, if not, check the Foot Valve (Part No. SPE093).
- 8.4 Run the pump to stall condition. (This done by closing off the outlet end of the discharge hose).
- 8.5 The Check the pressure in the discharge hose on the up and down stroke of the piston. Pressure readings should as follows.

◆ Piston up stroke	5000 kPa
◆ Piston Down stroke	3000 kPa