

GENERAL INFORMATION

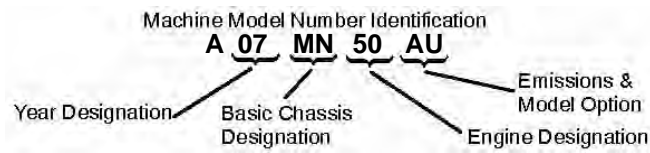
MODEL NUMBER INFORMATION	1.2
MODEL NUMBER	1.2
ENGINE DESIGNATION NUMBERS	1.2
VEHICLE IDENTIFICATION NUMBER (VIN)	1.2
TRANSMISSION I.D. LOCATION	1.2
ENGINE AND MACHINE SERIAL NUMBERS	1.2
PUBLICATIONS	1.3
PAINT CODES	1.3
REPLACEMENT KEYS	1.3
SPORTSMAN 'DELUXE' AND 'STANDARD' MODEL COMPONENT COMPARISON ..	1.4
SPORTSMAN X2 'DELUXE' AND 'STANDARD' MODEL COMPONENT COMPARISON	1.5
2007 SPORTSMAN 450	1.6
MODEL NUMBER: A07MH46AA, AZ	1.6
2007 SPORTSMAN 500 EFI	1.8
MODEL NUMBER: A07MH50AX, AY, AZ, AQ / A07MN50AL, AF / A07MH50FC	1.8
2007 SPORTSMAN X-2 500 EFI	1.10
MODEL NUMBER: A07TH50AU, AZ, AQ / A07TN50AF / A07TH50EA	1.10
MISC. NUMBERS/CHARTS	1.12
STANDARD TORQUE SPECIFICATIONS	1.12
SAE TAP DRILL SIZES	1.13
METRIC TAP DRILL SIZES	1.13
DECIMAL EQUIVALENTS	1.13
CONVERSION TABLE	1.14
GLOSSARY OF TERMS	1.15

GENERAL INFORMATION

MODEL NUMBER INFORMATION

Model Number

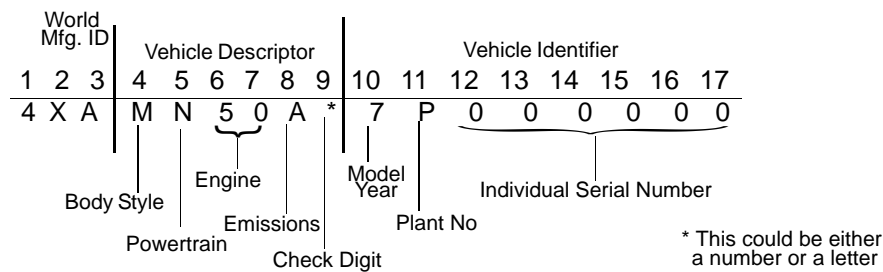
The machine model number must be used with any correspondence regarding warranty or service.



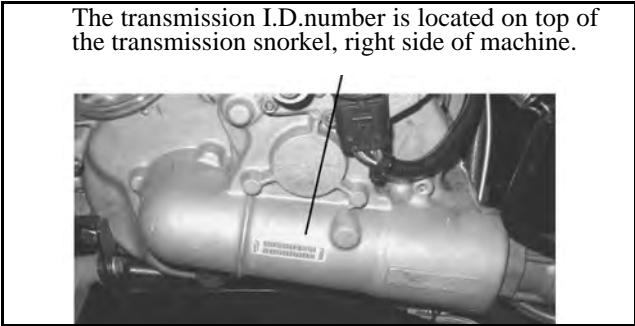
Engine Designation Numbers

EH50PLE - Single Cylinder, Liquid Cooled, 4 Stroke, Electric Start

Vehicle Identification Number (VIN)

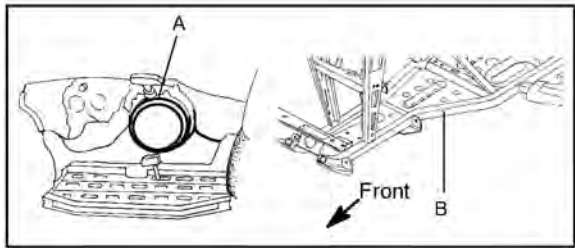


Transmission I.d. Location



Engine And Machine Serial Numbers

The machine model number and serial number are important for vehicle identification. Be sure to refer to the engine model number and serial number whenever corresponding about an engine. This information can be found on the sticker applied to the top side of the crankcase (A). An additional number is stamped on the side of the crankcase beneath the cylinder coolant elbow.



The machine serial number is stamped on the lower left side of the frame tube (B).

Publications

Table 1-1: Publications

Year	Model	Model No.	Owner's Manual PN	Parts Manual PN	Parts Micro Fiche PN
2007	Sportsman 500 EFI	A07MN50A (Deluxe) A07MH50A (Standard) A07MH50F (Standard Intl')	9920364	9920365	N/A
2007	Sportsman X2 500 EFI	A07TN50A (Deluxe) A07TH50A (Standard)	9920632	9920902	N/A
2007	Sportsman 450 EFI	A07MH46A	9920629	9920557	N/A
2007	Sportsman X2 500 EFI Quadricycle	A07MH46E	9920650	9920899	N/A

Paint Codes

Table 1-2: Paint Codes

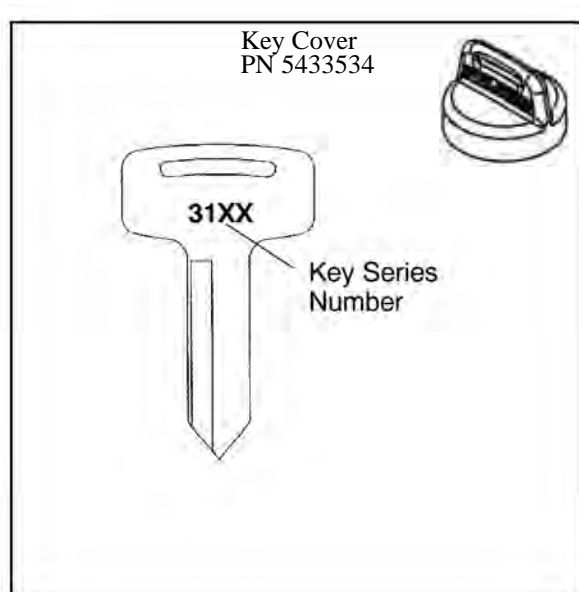
PAINTED PART	COLOR DESCRIPTION	DITZLER NUMBER	POLARIS NUMBER
Sportsman Frame	Black	9440	P-067

Replacement Keys

Replacement keys can be made from the original key (Phoenix excluded). To identify which series the key is, take the first two digits on the original key and refer to the chart to the right for the proper part number. Should both keys become lost, ignition switch replacement is required.

Table 1-3: Key Numbers

Series #	Part Number
20	4010278
21	4010278
22	4010321
23	4010321
27	4010321
28	4010321
31	4110141
32	4110148
67	4010278
68	4010278



GENERAL INFORMATION

Sportsman 'Deluxe' and 'Standard' Model Component Comparison

For Model Year 2007, a Sportsman 'Deluxe' and 'Standard' model were offered. Use the following table as a guide:

SPORTSMAN 'DELUXE' MODEL	Item Location	SPORTSMAN 'STANDARD' MODEL
Winch	1	No Winch
PXT Tires	2	Titan Tires
PVT w/EBS	3	Non-EBS (X2 excluded)
Rear Work Lights	4	No Work Lights
Front Drive w/ Active Descent Control (ADC)	5	No Active Descent Control (ADC)
Speed Sensor Wiring for ADC	6	No Sensor Wiring Change
Rear Rack Extension	7	No Rack Extension
Cast Aluminum Wheels	8	Steel Wheels
Single Exhaust	9	Single Exhaust
Wire Harness w/ Active Descent Control (ADC)	10	Standard Wire Harness
PDM w/ Active Descent Control (ADC)	10	Standard PDM



Deluxe Model Pictured

Sportsman X2 ‘Deluxe’ and ‘Standard’ Model Component Comparison

For Model Year 2007, an X2 ‘Deluxe’ and ‘Standard’ model were offered. Use the following table as a guide:

X2 ‘DELUXE’ MODEL	Item Location	X2 ‘STANDARD’ MODEL
Winch	1	No Winch
Rear Work Lights	2	No Work Lights
Front Drive w/ Active Descent Control (ADC)	3	No Active Descent Control (ADC)
Cast Aluminum Wheels	4	Steel Wheels



Standard Model Pictured

GENERAL INFORMATION

2007 SPORTSMAN 450

Model Number: A07MH46AA, AZ

Engine Model: EH46PLE

Table 1-4: Sportsman 450 General Specifications

Category	Dimension / Capacity
Length	83 in./211 cm
Width	48 in./122 cm
Height	48 in./122 cm
Wheel Base	50.5 in./128.3 cm
Ground Clearance	11 in./27.94 cm
Dry Weight	715 lbs./324 kg
Gross Vehicle Weight	1210 lbs./549 kg
Front Rack Capacity	90 lbs./40.8 kg
Rear Rack Capacity	180 lbs./81.6 kg
Towing Capacity	1225 lbs./555.6 kg
Body Style	Spirit
Hitch Tongue Capacity	120 lbs./54.4 kg



Table 1-5: Sportsman 450

ENGINE	
Platform	Fuji Single Cylinder
Engine Model Number	EH46PLE010
Engine Displacement	455cc
Number of Cylinders	1
Bore & Stroke (mm)	87.9 x 75 mm
Compression Ratio	9.8:1
Compression Pressure	50-90 psi W/Compression Release
Engine Idle Speed	1100 ± 50 RPM
Engine Max Operating Rpm	6000 Rpm ± 200 Rpm
Cooling System / Capacity	Liquid - 2.25 qt / 2.1 ltr
Overheat Warning	HOT on Instrument Cluster
Lubrication	Pressurized Dry Sump
Oil Requirements / Capacity	Polaris 0W-40 2 qt. / 1.9 ltr
Exhaust System	Single Pipe USFS Approved
Fuel System	
Carburetor	Mikuni BST 34mm
Main Jet	167.5
Pilot Jet	42.5
Jet Needle / Clip Position	4IB33 - 3
Needle Jet	P-6M (829)
Pilot Screw	2 3/4 Turns Out (initial)
Pilot Air Jet	1.3
Float Height	13mm ± 1 (.51 ± 0.40")
Fuel Delivery	Fuel Pump
Fuel Capacity / Requirement	4.25 gal US / 19.9 liters 87 Octane (minimum) or 89 Oxygenated
Electrical	
Alternator Output	260 w @ 3000 RPM
Voltage Regulator	3-phase - PDM
Lights : Pod	50 watts
Grill	2 x 37 watts
Brake	26.9 watts
Tail	8.26 watts
Worklight	13 watts
Indicator	1 watt
Operating RPM	6000 RPM
Ignition System	DC/CDI Ignition
Ignition Timing	30°± 2° BTDC @ 5000 RPM
Spark plug / Gap	BKR6E / .035 in. / 0.9 mm
Battery / Amp Hr	Maintenance-Free / 12 Amp Hr.
Circuit Protection	Solid State - PDM
Starting	Electric / Recoil
Instrument Cluster	Analog Speedo w/ LCD

Table 1-6: Sportsman 450

Drivetrain	
Transmission Type	Drumshift - H/L/N/R/P
Transmission Capacity	32 oz. / 948 ml
Front Gearcase Capacity	8.97 oz. / 265 ml
Gear Ratio :	Low 23.91:1 Rev 16.30:1 High 10.49:1 Front Drive 3.82:1
Clutch Type	PVT Non-EBS
Belt	3211077
Steering / Suspension	
Front Suspension / Shock	A-arm / MacPherson Strut
Front Travel	8.2 in. / 20.8 cm
Rear Suspension / Shock	Progressive Rate Independent - w/ 2" Coil-over shock
Rear Travel	9.5 in. / 24.13 cm
Ground Clearance	11 in. / 27.94 cm
Shock Preload Adjustment Front / Rear	Front -Non Adjustable. Rear - Ratchet Style- Std.
Turning Radius	65 in./165.10 cm unloaded
Toe Out	0-1/16 in / .0 - .159 mm
Wheels / Brakes	
Wheel / Tire Size / Pattern - Front	Steel 25x8 - 12 / 4-156
Wheel / Tire Size / Pattern - Rear	Steel 25x11 - 12 / 4-156
Recommended Air Pressure	Front & Rear - 5 psi
Brake - Front	Dual Hydraulic Disc
Brake - Rear	Single Hydraulic Disc
Brake Fluid	DOT - approved only

Table 1-7: Sportsman 450 Jetting

Altitude		AMBIENT TEMPERATURE	
		Below 40 ° F Below 5 ° C	+40 to +80 ° F +5 to +28 ° C
Meters (Feet)	0-1800 (0-6000)	175	167.5
	1800-3700 (6000-12000)	162.5	157.5

Table 1-8: Sportsman 450 Clutching

Altitude		Shift Weight	Drive Clutch Spring	Driven Clutch Spring	Driven- Helix
Meters (Feet)	0-1800 (0-6000)	10 WH (5630710)	Blu/Grey (7042202)	Black (7041782)	40° 2+2 (5131446)
	1800-3700 (6000-12000)	20-40 (5631356)	Blu/Grey (7042202)	Black (7041782)	40° 2+2 (5131446)

2007 SPORTSMAN 500 EFI

Engine Model: EH50PLE

Table 1-9: Sportsman 500 EFI General Specifications

Category	Dimension / Capacity
Length	83 in./211 cm
Width	48 in./122 cm
Height	48 in./122 cm
Wheel Base	50.5 in./128.3 cm
Ground Clearance	11.25 in./28.6 cm
Dry Weight	715 lbs./324 kg
Gross Vehicle Weight	1200 lbs./544 kg
Front Rack Capacity	90 lbs./40.8 kg
Rear Box Capacity	180 lbs./81.6 kg
Towing Capacity	1225 lbs./555.6 kg
Body Style	Spirit
Hitch Tongue Capacity	120 lbs./54.4 kg



Table 1-10: Sportsman 500 EFI

ENGINE	
Platform	Fuji Single Cylinder
Engine Model Number	EH50PLE210
Engine Displacement	499cc
Number of Cylinders	1
Bore & Stroke (mm)	92 x 75 mm
Compression Ratio	10.2:1
Compression Pressure	50-90 psi w/Compression Release
Engine Idle Speed	1100 ± 200 RPM
Engine Max Operating Rpm	6000 Rpm ± 200 Rpm
Cooling System / Capacity	Liquid - 2.5 qt / 2.4 ltr
Overheat Warning	HOT on Instrument Cluster
Lubrication	Pressurized Dry Sump
Oil Requirements / Capacity	Polaris 0W-40 2 qt. / 1.9 ltr
Exhaust System	Single Pipe USFS Approved
Fuel System	
Fuel System	Electronic Fuel Injection (EFI)
Fuel Pump (in tank assembly)	25L per hr. at 39 psi
Fuel Filter(s)	10 micron in-line 30 micron in tank - (not replaceable)
Fuel Injector(s)	Visteon
EFI Controller	Visteon VP5U1U-12A650-AA
Fuel Capacity / Requirement	6 gal US / 22.7 liters 87 Octane (minimum) or 89 Oxygenated
Electrical	
Alternator Output	350 w @ 6000 RPM
Lights : Pod	50 watts
Grill	2 x 37 watts
Brake	2 x 8.26 watts
Tail	2 x 26.9 watts
Worklight	2 x 13 watts
Indicator	1 watt
Operating RPM	6000 RPM
Ignition System	DC/CDI Ignition
Ignition Timing	13°± 3 BTDC @ 1150 RPM
Spark plug / Gap	BKR6E / .035 in. / 0.9 mm
Battery / Amp Hr	Lead Acid / 30 Amp Hr.
Circuit Breakers	Fan 12 amp / Switched Power 10 amp / Fuel Pump 10 amp / ECU 15 amp / Ignition Coil 10 amp / Accessory Power 10 amp / Lights 20 Amp
Starting	Electric / Recoil
Instrument Cluster	Analog Speedo w/ LCD

Table 1-11: Sportsman 500 EFI

Drivetrain	
Transmission Type	Drumshift - H/L/N/R/P
Transmission Capacity	32 oz. / 948 ml
Front Gearcase Capacity- CH	8.97 / 265 ml
Front Gearcase Capacity- ADC	9.3 / 275 ml
Gear Ratio :	Low 23.91:1 Rev 21.74:1 High 10.57:1 Front Drive 3.82:1
Clutch Type	PVT (Standard Models) PVT w/EBS (Deluxe Models)
Belt	3211113 EBS 3211077 Non-EBS
Steering / Suspension	
Front Suspension / Shock	A-arm / MacPherson Strut
Front Travel	8.2 in. / 20.8 cm
Rear Suspension / Shock	Progressive Rate Independent - Coil - over shock
Rear Travel	9.5 in. / 24.13 cm
Ground Clearance	11 in. / 27.94 cm
Shock Preload Adjustment Front / Rear	Front -Non Adjustable. Rear - Ratchet Style- Std.
Turning Radius	65 in./165.10 cm unloaded
Toe Out	0-1/16 in / .0 - .159 mm
Wheels / Brakes	
Wheel/Tire Size / Pattern - Front	26 x 8 - 12 / 4-156
Wheel/Tire Size / Pattern - Rear	26 x 11 - 12 / 4-156
Recommended Air Pressure	Front & Rear - 5 psi
Brake - Front	Dual Hydraulic Disc
Brake - Rear	Single Hydraulic Disc
Brake Fluid	DOT - approved only

Table 1-12: Sportsman 500 EFI Clutching

Altitude		Shift Weight	Drive Clutch Spring	Driven Clutch Spring	Helix* *No Adjustment
Meters (Feet)	0-1800 (0-6000)	10 WH (5630710)	Blu/Green (7041157)	White/Yel (7041635)	EBS (5131674)
	1800-3700 (6000-12000)	10 RH (5630709)	Blu/Green (7041157)	White/Yel (7041635)	EBS (5131674)

GENERAL INFORMATION

2007 SPORTSMAN X-2 500 EFI

Model Number: A07TH50AU, AZ, AQ / A07TN50AF / A07TH50EA
 (Standard Models) (Deluxe Model) (Intl' Quadricycle)

Engine Model: EH50PLE

Table 1-13: Sportsman X-2 500 EFI General Specifications

Category	Dimension / Capacity
Length	93 in./236 cm
Width	48 in./122 cm
Height	48 in./122 cm
Wheel Base	57 in./145 cm
Ground Clearance	11 in./28 cm
Dry Weight	798 lbs./362 kg
Gross Vehicle Weight	1500 lbs./680 kg
Front Rack Capacity	90 lbs./40.8 kg
Rear Box Capacity	400 lbs./81.6 kg
Towing Capacity	1225 lbs./555.6 kg
Body Style	Spirit
Hitch Tongue Capacity	120 lbs./54.4 kg Rear box capacity and tongue weight not to exceed 400 lbs./181kg



Table 1-14: Sportsman X2 500 EFI

ENGINE	
Platform	Fuji Single Cylinder
Engine Model Number	EH50PLE210
Engine Displacement	499cc
Number of Cylinders	1
Bore & Stroke (mm)	92 x 75 mm
Compression Ratio	10.2:1
Compression Pressure	60-90 psi w/Compression Release
Engine Idle Speed	1150 ± 50 RPM
Engine Max Operating Rpm	6000 Rpm ± 200 Rpm
Cooling System / Capacity	Liquid - 2.5 qt / 2.4 ltr
Overheat Warning	HOT on Instrument Cluster
Lubrication	Pressurized Dry Sump
Oil Requirements / Capacity	Polaris 0W-40 2 qt. / 1.9 ltr
Exhaust System	Single Pipe USFS Approved
Fuel System	
Fuel System	Electronic Fuel Injection (EFI)
Fuel Pump (in tank assembly)	25L per hr. at 39 psi
Fuel Filter(s)	10 micron in-line 30 micron in tank - (not replaceable)
Fuel Injector(s)	Visteon
EFI Controller	Visteon VP5U1U-12A650-AA
Fuel Capacity / Requirement	6 gal US / 22.7 liters 87 Octane (minimum) or 89 Oxygenated
Electrical	
Alternator Output	350 w @ 6000 RPM
Lights : Pod	50 watts
Grill	2 x 37 watts
Brake	2 x 8.26 watts
Tail	2 x 26.9 watts
Worklight	2 x 13 watts
Indicator	1 watt
Operating RPM	6000 RPM
Ignition System	DC/CDI Ignition
Ignition Timing	10°± 1 BTDC @ 1150 RPM
Spark plug / Gap	BKR6E / .035 in. / 0.9 mm
Battery / Amp Hr	Lead Acid / 30 Amp Hr.
Circuit Breakers	Fan 12 amp / Switched Power 10 amp / Fuel Pump 10 amp / ECU 15 amp / Ignition Coil 10 amp / Accessory Power 10 amp / Lights 20 Amp
Starting	Electric / Recoil
Instrument Cluster	Analog Speedo w/ LCD

Table 1-15: Sportsman X2 500 EFI

Drivetrain	
Transmission Type	Drumshift - H/L/N/Rev/Park
Transmission Capacity	32 oz. / 948 ml
Front Gearcase Capacity- CH	8.97 / 265 ml
Front Gearcase Capacity- ADC	9.3 / 275 ml
Gear Ratio :	Low 23.91:1 Rev 21.74:1 High 10.57:1 Front Drive 3.82:1
Clutch Type	PVT w/EBS
Belt	3211113
Steering / Suspension	
Front Suspension / Shock	A-arm / MacPherson Strut
Front Travel	8.2 in. / 20.8 cm
Rear Suspension / Shock	Progressive Rate Independent - Coil - over shock
Rear Travel	8.75 in. / 22.2 cm
Ground Clearance	11 in. / 28 cm
Shock Preload Adjustment Front / Rear	Front -Non Adjustable. Rear - Ratchet Style- Std.
Turning Radius	82 in./208 cm unlocked
Toe Out	0-1/16 in / .0 - .159 mm
Wheels / Brakes	
Wheel Size / Pattern - Front	Steel 12x6 / 4-156
Wheel Size / Pattern - Rear	Steel 12x8 / 4-156
Front Tire Size	25x8-12
Rear Tire Size	25x11-12
Recommended Air Pressure	Front & Rear - 5 psi
Brake - Front	Dual Hydraulic Disc
Brake - Rear	Dual Hydraulic Disc

Table 1-16: Sportsman X2 500 EFI

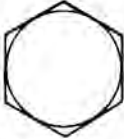
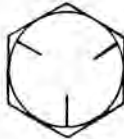
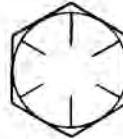
Altitude		Shift Weight	Drive Clutch Spring	Driven Clutch Spring	Helix* *No Adjustment
Meters (Feet)	0-1800 (0-6000)	10 WH (5630710)	Blu/Green (7041157)	White/Yel (7041635)	EBS (5131674)
	1800-3700 (6000-12000)	10 RH (5630709)	Blu/Green (7041157)	White/Yel (7041635)	EBS (5131674)

GENERAL INFORMATION

MISC. NUMBERS/CHARTS

Standard Torque Specifications

The following torque specifications are to be used as a general guideline. There are exceptions in the steering, suspension, and engine areas. Always consult the exploded views in each manual section for torque values of fasteners before using standard torque.

				
Bolt Size	Threads/In	Grade 2	Grade 5	Grade 8
Torque in. lbs. (Nm)				
#10	- 24	27 (3.1)	43 (5.0)	60 (6.9)
#10	- 32	31 (3.6)	49 (5.6)	68 (7.8)
Torque ft. lbs. (Nm)*				
1/4	- 20	5 (7)	8 (11)	12 (16)
1/4	- 28	6 (8)	10 (14)	14 (19)
5/16	- 18	11 (15)	17 (23)	25 (35)
5/16	- 24	12 (16)	19 (26)	29 (40)
3/8	- 16	20 (27)	30 (40)	45 (62)
3/8	- 24	23 (32)	35 (48)	50 (69)
7/16	- 14	30 (40)	50 (69)	70 (97)
7/16	- 20	35 (48)	55 (76)	80 (110)
1/2	- 13	50 (69)	75 (104)	110 (152)
1/2	- 20	55 (76)	90 (124)	120 (166)
Metric				
6 x 1.0	72-78 In. lbs.			
8 x 1.25	14-18 ft. lbs.			
10 x 1.25	26-30 ft. lbs.			

*To convert ft. lbs. to Nm multiply foot pounds by .1382

*To convert Nm to ft. lbs. multiply Nm by .7376.

SPECIFIC TORQUE VALUES OF FASTENERS

Refer to exploded views in the appropriate section.

SAE Tap Drill Sizes

Thread Size/ Drill Size		Thread Size / Drill Size	
#0-80	3/64	1/2-13	27/64
#1-64	53	1/2-20	29/64
#1-72	53	9/16-12	31/64
#2-56	51	9/16-18	33/64
#2-64	50	5/8-11	17/32
#3-48	5/64	5/8-18	37/64
#3-56	45	3/4-10	21/32
#4-40	43	3/4-16	11/16
#4-48	42	7/8-9	49/64
#5-40	38	7/8-14	13/16
#5-44	37	1-8	7/8
#6-32	36	1-12	59/64
#6-40	33	1 1/8-7	63/64
#8-32	29	1 1/8-12	1 3/64
#8-36	29	1 1/4-7	1 7/64
#10-24	24	1 1/4-12	1 11/64
#10-32	21	1 1/2-6	1 11/32
#12-24	17	1 1/2-12	1 27/64
#12-28	4.6mm	1 3/4-5	1 9/16
1/4-20	7	1 3/4-12	1 43/64
1/4-28	3	2-4 1/2	1 25/32
5/16-18	F	2-12	1 59/64
5/16-24	I	2 1/4-4 1/2	2 1/32
3/8-16	O	2 1/2-4	2 1/4
3/8-24	Q	2 3/4-4	2 1/2
7/16-14	U	3-4	2 3/4
7/16-20	25/64		

Metric Tap Drill Sizes

Tap Size	Drill Size	Decimal Equivalent	Nearest Fraction
3x.50	#39	0.0995	3/32
3x.60	3/32	0.0937	3/32
4x.70	#30	0.1285	1/8
4x.75	1/8	0.125	1/8
5x.80	#19	0.166	11/64
5x.90	#20	0.161	5/32
6x1.00	#9	0.196	13/64
7x1.00	16/64	0.234	15/64
8x1.00	J	0.277	9/32
8x1.25	17/64	0.265	17/64
9x1.00	5/16	0.3125	5/16
9x1.25	5/16	0.3125	5/16
10x1.25	11/32	0.3437	11/32
10x1.50	R	0.339	11/32
11x1.50	3/8	0.375	3/8
12x1.50	13/32	0.406	13/32
12x1.75	13/32	0.406	13/32

Decimal Equivalents

1/640156	
1/320312	.. 1 mm= .0394"
3/640469	
1/160625	
5/640781	.. 2 mm = .0787"
3/320938	
7/641094	.. 3 mm = .1181"
1/81250	
9/641406	
5/321563	.. 4 mm = .1575"
11/641719	
3/161875	.. 5mm= .1969"
13/642031	
7/322188	
15/642344	.. 6 mm = .2362"
1/425	
17/642656	.. 7 mm = .2756"
9/322813	
19/642969	
5/163125	.. 8mm= .3150"
21/643281	
11/323438	.. 9 mm = .3543"
23/643594	
3/8375	
25/643906	.. 10 mm = .3937"
13/324063	
27/644219	.. 11 mm =.4331"
7/164375	
29/644531	
15/324688	.. 12 mm = .4724"
31/644844	
1/25	.. 13mm = .5118"
33/645156	
17/325313	
35/645469	.. 14 mm = .5512"
9/165625	
37/645781	.. 15 mm = .5906"
19/325938	
39/646094	
5/8625	.. 16mm=. 6299"
41/646406	
21/326563	.. 17 mm =.6693"
43/646719	
11/166875	
45/647031	.. 18 mm = .7087"
23/327188	
47/647344	.. 19 mm = .7480"
3/475	
49/647656	
25/327813	.. 20 mm = .7874"
51/647969	
13/168125	.. 21 mm =.8268"
53/648281	
27/328438	
55/648594	.. 22 mm = .8661"
7/8875	
57/648906	.. 23 mm = .9055"
29/329063	
59/649219	
15/169375	.. 24 mm = .9449"
61/649531	
31/329688	.. 25 mm = .9843"
63/649844	
1	1.0	

GENERAL INFORMATION

Conversion Table

Unit of Measure	Multiplied by	Converts to
ft. lbs.	x 12	= in. lbs.
in. lbs.	x .0833	= ft. lbs.
ft. lbs.	x 1.356	= Nm
in. lbs.	x .0115	= kg-m
Nm	x .7376	= ft. lbs.
kg-m	x 7.233	= ft. lbs.
kg-m	x 86.796	= in. lbs.
kg-m	x 10	= Nm
in.	x 25.4	=mm
mm	x .03937	= in.
in.	x 2.54	= cm
mile (mi.)	x 1.6	= km
km	x .6214	= mile (mi.)
Ounces (oz.)	x 28.35	= Grams (g)
Fluid Ounces (fl. oz.)	x 29.57	= Cubic Centimeters (cc)
Cubic Centimeters (cc)	x .03381	= Fluid Ounces (fl. oz.)
Grams (g)	x 0.035	= Ounces (oz.)
lb.	x .454	= kg
kg	x 2.2046	= lb.
Cubic inches (cu. in)	x 16.387	= Cubic centimeters (cc)
Cubic centimeters (cc)	x 0.061	= Cubic inches (cu. in)
Imperial pints (Imp pt.)	x 0.568	= Liters (l)
Liters (l)	x 1.76	= Imperial pints (Imp pt.)
Imperial quarts (Imp qt.)	x 1.137	= Liters (l)
Liters (l)	x 0.88	= Imperial quarts (Imp qt.)
Imperial quarts (Imp qt.)	x 1.201	= US quarts (US qt.)
US quarts (US qt.)	x 0.833	= Imperial quarts (Imp qt.)
US quarts (US qt.)	x 0.946	= Liters (l)
Liters (l)	x 1.057	= US quarts (US qt.)
US gallons (US gal)	x 3.785	=Liters (l)
Liters (l)	x 0.264	= US gallons (US gal)
Pounds - force per square inch (psi)	x 6.895	= Kilopascals (kPa)
Kilopascals (kPa)	x 0.145	= Pounds - force per square inch (psi)
Kilopascals (kPa)	x 0.01	= Kilograms - force per square cm
Kilograms - force per square cm	x 98.1	= Kilopascals (kPa)
$\pi(3.14) \times R^2 \times H$ (height)		= Cylinder Volume

°C to °F: $9 (^\circ\text{C} + 40) \div 5 - 40 = ^\circ\text{F}$

°F to °C: $5 (^\circ\text{F} + 40) \div 9 - 40 = ^\circ\text{C}$